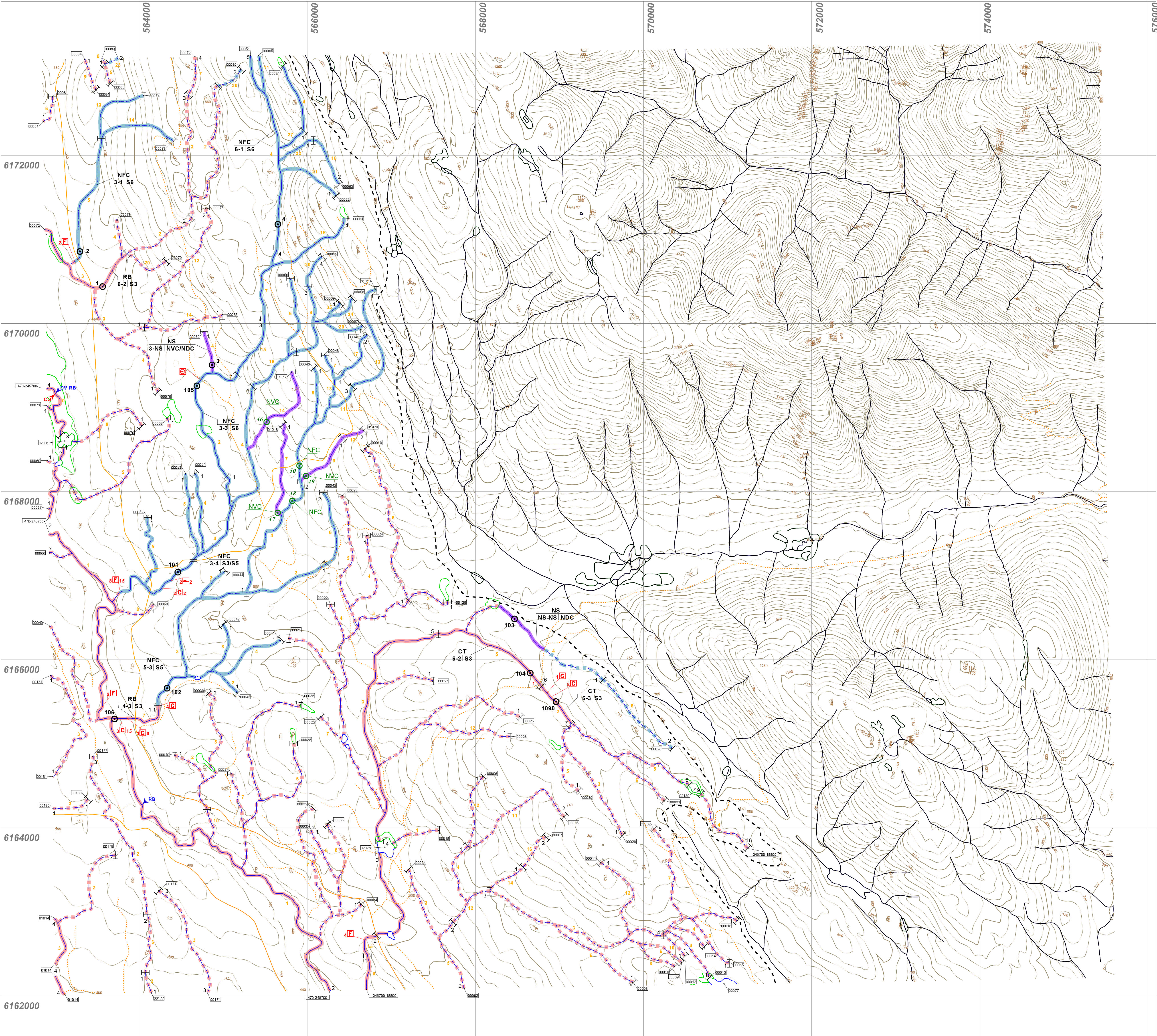
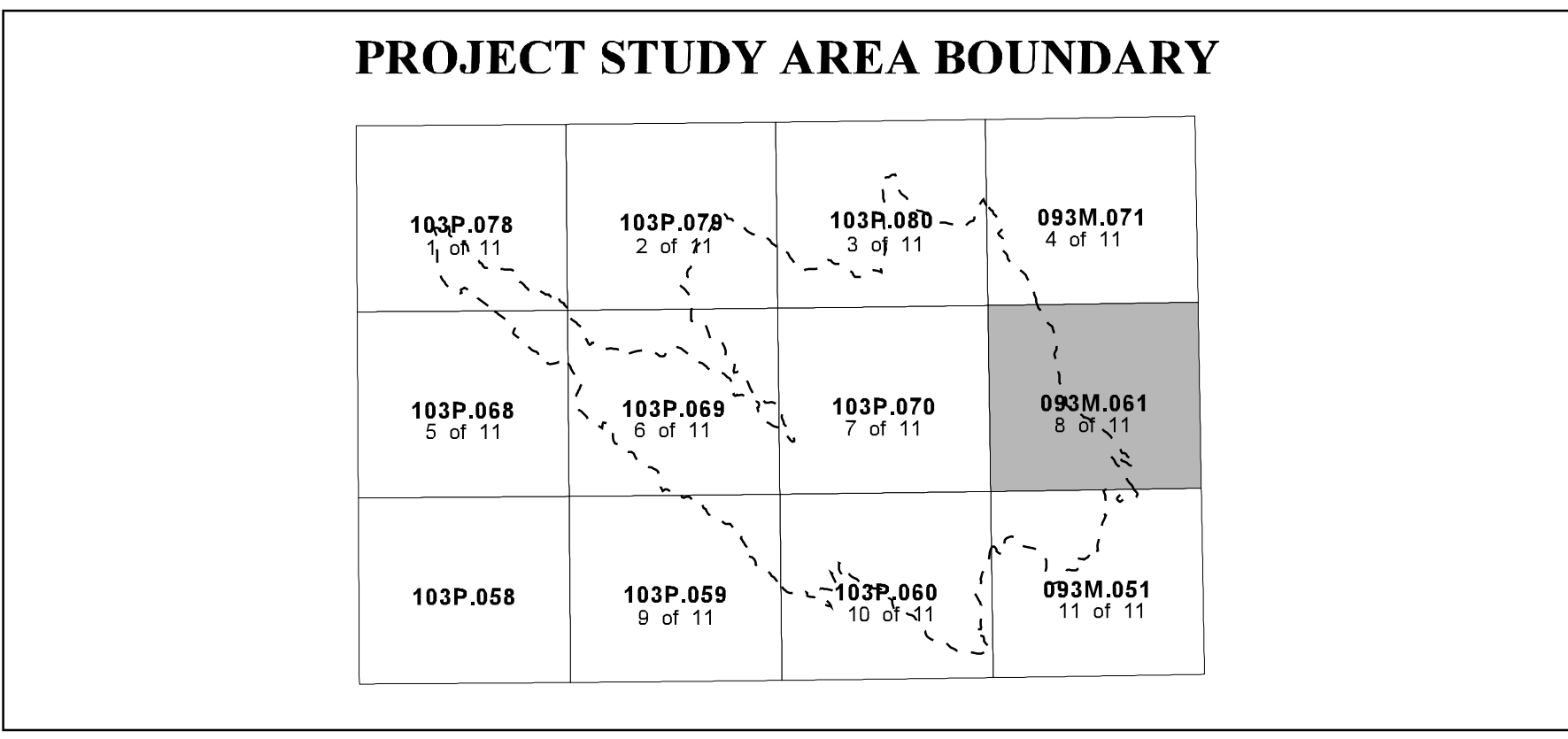


FISH SPECIES

CODE	DESCRIPTION	Historical - Symbology
NFC	No Fish Caught	Fish Presence - Salmon
NS	Not Sampled	Fish Presence - Sport
BT	Bull Trout	Fish Presence - Regionally Significant
CO	Coho Salmon	Fish Presence - Other
CT	Cutthroat Trout (General)	Fish Observation - Salmon
DV	Dolly Varden	Fish Observation - Sport
LNC	Longnose Dace	Fish Obs - Regionally Significant
NSC	Northern Squawfish	Fish Observation - Other
MW	Mountain Whitefish	Fish Spawning Area
RB	Rainbow Trout	Historical Sample Site
ST	Sheefish Trout	Historical Sample Site Number

Source: MELP



"This product has been accepted as being in accordance with approved standards within the limits of Ministry quality assurance procedures. Users are cautioned that interpreted information on this product developed for the purposes of the Forest Practices Code Act and Regulations for example stream classifications, is subject to review by a statutory decision maker for the purposes of determining whether or not to approve an operational plan."

INVENTORY SOURCE INFORMATION CODES

CODE	DESCRIPTION	CODE	DESCRIPTION	CODE	DESCRIPTION	CODE	DESCRIPTION	CODE	DESCRIPTION
BASE	Base Map	LE SYM	Lake Symbol	APP	Aerial Photography	AP	Aerial Photography	INVT	Inventory
TRIM	1:20,000 TRIM Maps	INV	Field Inventory	VID	Video, Approximate	VID	Video	MELP	Ministry of Environment, Land & Parks
NTS	1:50,000 NTS Maps	SS	Summary	VPC	Video, Corrected	FISH	Fish Information	MOF	Ministry of Forests
OTH	Other Map Source	N/A	Not Applicable	OTH	Other	INVT	Inventory	GRC	Geological Survey of Canada
STR SYM	Stream Symbol	OTH	Other	OTH	Other	INVT	Inventory	OTH	Other
INV	Field Inventory	LOC	Location Information	INV	Field Inventory	SS	Summary	DATE INV	Date of Inventory
SS	Summary	PDE	Field GPS	N/A	Not Applicable	N/A	Not Applicable		
N/A	Not Applicable	APP	Aerial Photography	OTH	Other				
OTH	Other								

FOREST PRACTICES CODE
RIPARIAN CLASSES
(STREAM CLASSIFICATION)

Riparian Class	Average Channel Width (m)	Reserve Zone Width (m)	Management Zone Width (m)	Total RMA Width (m)
S1 Large River	> 100	0	100	100
S2	> 20	0	20	20
S3	> 5 < 20	10	20	30
S4	> 1.5 < 5	20	30	50
S5	> 1 < 1.5	0	30	30
S6	> 0.5 < 1	0	30	30

BASE MAP INFORMATION
Projection: UTM
Datum: NAD83
UTM Zone: 9

INVENTORY SOURCE INFORMATION
BASE: TRIM
LOC: FDG
HAB: INV
DATE INV: 1998/08/23
STR SYM: INV
LK SYM: N/A
FISH: INV
INV MGNT: MELP